

# Room Alert<sup>®</sup> 3E

Temperature & Environment Monitoring... *Made Easy!*

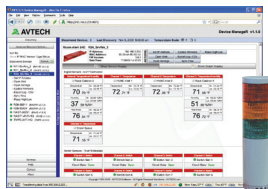


Phone **401.628.1600**  
Fax **401.628.1601**  
Web **AVTECH.com**

**User's Guide &  
Reference Manual**

# Protect Your IT Facility...

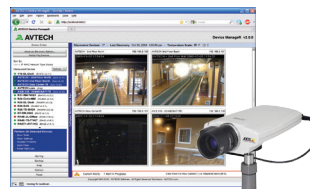
## *Don't Wait Until It's Too Late!*



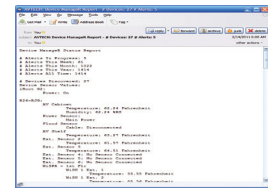
Monitor, Alert...



Log, Graph...



View, Respond...



Report, Plan!

## Install Room Alert & TemPageR...

### The Most Popular Physical Environment Monitors In The World!

- Digital Temperature
- Digital Outdoor Temperature
- Digital Fluid Temperature
- Digital Humidity
- Main / UPS Power
- Flood / Water
- Heat Index (Feels Like)
- Smoke / Fire
- Sound, Light
- Air Flow
- Motion, Room Entry
- Panic Buttons, Security
- Wireless Sensor Hubs
- Light Towers, Relay Switches
- Network Cameras
- Switch Sensors
- Dry Contacts
- Low Voltage Sensors

*The Most Advanced, Easy-To-Use, Reliable & Affordable Monitors Available.*



888.220.6700  
401.628.1600

AVTECH.com  
EnvironmentMonitor.com

**On behalf of the entire team at AVTECH,  
we say, “*Thank You!*” It is our privilege to  
serve you, our valued customer.**

## Copyright Information

© Copyright 1988-2013 AVTECH Software Inc.

All Rights Reserved. No part of this book may be used or reproduced for commercial benefit in any form or by any means, or stored in a database or retrieval system, without prior written permission of AVTECH Software Inc., except in the case of brief quotations embodied in articles and reviews. Making copies of any part of this book for any purpose other than your individual use is a violation of United States copyright laws and international treaty provisions. For information or additional copies, contact AVTECH Software Inc., as directed below. Printed in the United States of America.

## Warning and Disclaimer

This publication is shipped as is, without warranty of any kind, either express or implied. While every precaution has been taken in the preparation of this publication, the publisher and authors assume no responsibility for errors or omissions. Neither is any liability assumed for damages resulting from the use of the information or instructions contained herein. It is further stated that the publisher and authors are not responsible for any damage or loss to your data or equipment that may result directly or indirectly from your use of this publication and the related hardware & software. Nothing in the AVTECH firmware, software, SNMP Mibs, documentation or online resources shall be construed as conferring any license under any of the AVTECH Software (AVTECH) or any third party's intellectual property rights, whether by estoppel, implication, or otherwise.

## Trademark Acknowledgements

AVTECH, the AVTECH Logo, AVTECH Software, the AVTECH Manager Character, AVTECH.com, AVTECHSoftware.com, Device Discovery, Device ManageR, Environment Alarm, "Environment Monitoring Made Easy!", EnvironmentMonitor.com, "IT Environment Monitoring Made Easy!", Mini UPS, MUPS, "Network-Wide Monitoring Made Easy!", "Protect Your IT Environment... Don't Wait Until It's Too Late!", Room Alert, Room Alert PLUS, Room Alert Relay, Room Alert RPC, Room Alert Signal Tower, RoomAlert.com, "System Monitoring Made Easy!", TemPageR, TemPageR.com, "Temperature & Environment Monitoring... Made Easy!", "Temperature Monitoring Made Easy!", Wireless Sensor Hub, Wireless Sensor Hub & Powered Relay, WiSH and WiSPR are trademarks or registered trademarks of AVTECH Software Inc. Any other trademarks, product or company names mentioned herein are the property of their respective owners and used strictly for the purpose of identifying compatibility. AVTECH Software Inc. cannot attest to the accuracy of any other organization's ownership claim to a trademark and use of any trademark in this publication should not be regarded as affecting the validity of any trademark or service mark.

## Special Thanks

We would like to recognize our customers, field test participants, reseller partners, inhouse sales & support staff, as well as the entire software & hardware development teams for their contributions and assistance in the completion of this manual.

## Sales, Support & Contact Information

To receive further information or assistance regarding this publication, or any AVTECH product or service, please contact:

**Headquarters** AVTECH Software Inc.  
16 Cutler Street, Cutler Mill  
Warren, RI 02885 USA

**Phone** 401.628.1600  
**Sales** 888.220.6700

**Fax** 401.628.1601

**Email** [Sales@AVTECH.com](mailto:Sales@AVTECH.com)  
[Support@AVTECH.com](mailto:Support@AVTECH.com)  
[Info@AVTECH.com](mailto:Info@AVTECH.com)

**Web** [AVTECH.com](http://AVTECH.com)  
[EnvironmentMonitor.com](http://EnvironmentMonitor.com)  
[RoomAlert.com](http://RoomAlert.com)  
[TemPageR.com](http://TemPageR.com)



## Table of Contents

Introduction To Room Alert 3E.....	3
Room Alert 3E Package Contents.....	4
The Room Alert 3E ID Box .....	4
Front.....	4
Back .....	5
How To Install Your Room Alert 3E.....	6
Step 1: Connect your Room Alert 3E hardware. ....	6
If your network is Power over Ethernet (PoE) enabled . . .	6
If your network is not Power over Ethernet (PoE) enabled . . .	6
Step 2: Open your Room Alert 3E in your web browser . . .	7
With the built-in interface.....	7
With Device ManageR for advanced functionality. ....	7
Step 3: Connect Additional Components.....	7
How To Use Room Alert 3E’s Web Interface.....	8
Status.....	8
Current Sensor Status Bar.....	9
Sensor Display Area .....	10
Settings.....	11
Network.....	12
Ethernet Configuration.....	14
SMTP Email.....	15
Simple Network Management Protocol (SNMP) .....	17
Sensors .....	19
Alarm Options.....	24
Security .....	27
Advanced .....	28

**Room Alert 3E**

Help.....32  
About.....33  
Updating & Troubleshooting Your Room Alert 3E .....34  
    How To Download Firmware & Software Updates From AVTECH.com.....34  
    How To Update Room Alert 3E’s Firmware.....34  
    How To Discover Room Alert 3E When Your Network Blocks UDP Broadcasts .....35  
    How To Reset Room Alert 3E To Factory Defaults.....35  
Introduction To AVTECH’s Device Manager .....37  
Appendix: Sensors & Product Options

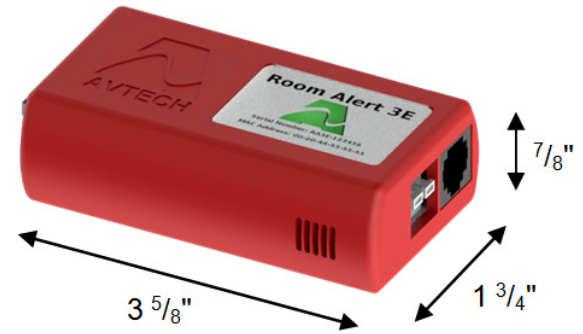


**Protect Your IT Facility... *Don't Wait Until It's To Late!***

## Introduction To Room Alert 3E

The Room Alert 3E monitor is AVTECH's most compact and economical hardware solution for *Temperature & Facilities Environment Monitoring . . . Made Easy.*

At 3 5/8" L x 1 3/4" W x 7/8" H and a mere 2 ounces, the Room Alert 3E is small and light enough to mount nearly anywhere; its PoE-enabled network port makes installation a snap, even where no electrical outlets are handy; and it's jam-packed with AVTECH's latest technology, so it's smart and powerful enough to monitor up to three (3) sensors: one (1) internal, one (1) external digital and one (1) external switch.



### Install your unit with minimal planning and less hassle.

- ✓ Get up and running in minutes with easy “Plug and Play” setup.
- ✓ Use Power over Ethernet to install even where no DC power is available.
- ✓ Easily mount Room Alert 3E—hang it from a nail and you're good to go!

### Get access from anywhere over the web.

- ✓ Configure, monitor and operate Room Alert 3E with its easy-to-use built-in web interface.
- ✓ Significantly expand its functionality with AVTECH's Device ManagerR, the powerful software bundled FREE with all Room Alert monitors.
- ✓ Have the flexibility to monitor with any SNMP-enabled 3<sup>rd</sup>-party monitoring application.

### Know immediately when physical conditions change.

- ✓ Set alert thresholds for the built-in temperature sensor from -40° to 185° F (-40° to 85° C).
- ✓ Alert multiple contacts on your team when thresholds are exceeded.
- ✓ Receive alert notifications by email, email-to-SMS and more on your computer or mobile phone.

### Expand your options as your needs evolve.

- ✓ Extend your reach by adding an external digital sensor up to 100 feet away and an external switch sensor up to 900!
- ✓ Generate clear visible and audible signals by adding a Light Tower (with adapter).
- ✓ Automatically turn on/off up to 4 electrical devices, such as air conditioners or generators, by adding a Relay Switch Sensor via a Light Tower & Relay Adapter.
- ✓ Explore your options further with your AVTECH Product Specialist.

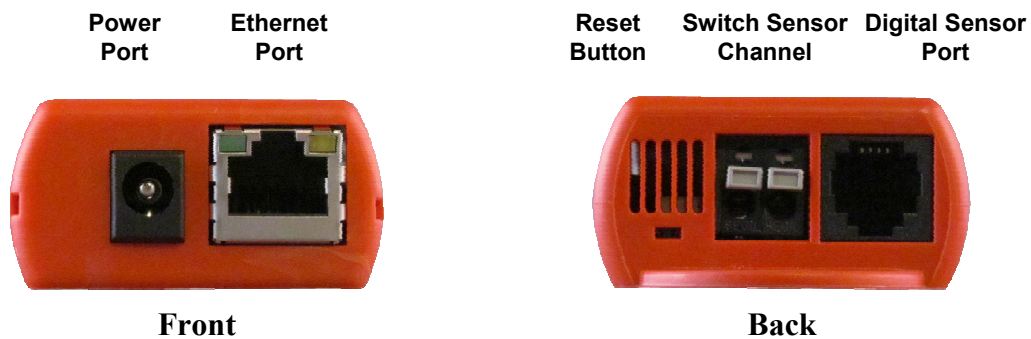
## Room Alert 3E

### Room Alert 3E Package Contents

The standard Room Alert 3E package includes:

- One (1) Room Alert 3E ID Box
- One (1) *Room Alert 3E User's Guide & Reference Manual* (You're reading it now.)
- One (1) Package Of Literature & Additional Information

### The Room Alert 3E ID Box



### Front

#### Power Port



A standard power port connects Room Alert 3E to an electrical outlet with AVTECH's International Power Adapter.

#### NOTE



Look for the AVTECH logo. Using another power adapter could damage the Room Alert 3E's circuit board. If you need one, purchase it online at [AVTECH.com](http://AVTECH.com). AVTECH has an international power adapter with a compatible plug style for each and every country.



**Ethernet Port**



An RJ-45 PoE-enabled port connects Room Alert 3E to your network via an RJ-45 network cable.

**Back**

**Reset Button**



A small push button resets Room Alert 3E to factory default settings.

**Switch Sensor Channel**



A pair of dry contacts connects Room Alert 3E to any AVTECH switch sensor or dry contact on a device (e.g., HVAC, generator, pump, fan, etc.) via standard speaker wire or low-voltage 2-wire cable.

**Digital Sensor Port**



A standard RJ-11 jack connects any AVTECH digital sensor or Light Tower & Relay Adapter to your Room Alert 3E via a standard RJ-11 (straight through) telephone cord.



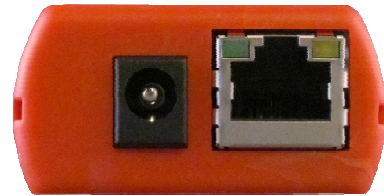
For more information about AVTECH sensors and accessories, please refer to the [Appendix](#) at the back of this manual or visit the [Sensors and Accessories](#) sections of [AVTECH.com](http://AVTECH.com).

## How To Install Your Room Alert 3E

### Step 1: Connect your Room Alert 3E hardware.

#### If your network is Power over Ethernet (PoE) enabled . . .

- Connect one end of a standard Ethernet cable to the Room Alert 3E's Ethernet port.
- Connect the other end to a PoE-enabled network jack.



*That's it! Your Room Alert 3E is now powered and discoverable on your network.*

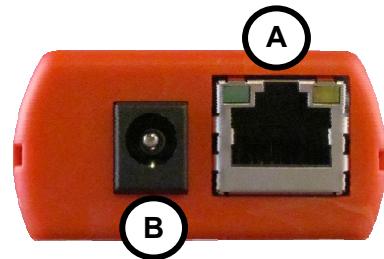
#### If your network is not Power over Ethernet (PoE) enabled . . .

##### A. Connect to your network first.

- Connect one end of a standard Ethernet cable to the Room Alert 3E's Ethernet port.
- Connect the other end to a network jack.

##### B. Then connect to a power source.

- Plug one end of AVTECH's International Power Adapter into the Room Alert 3E's power port.
- Plug the other end into a surge-protected power source.



*Your Room Alert 3E is now powered and discoverable on your network!*

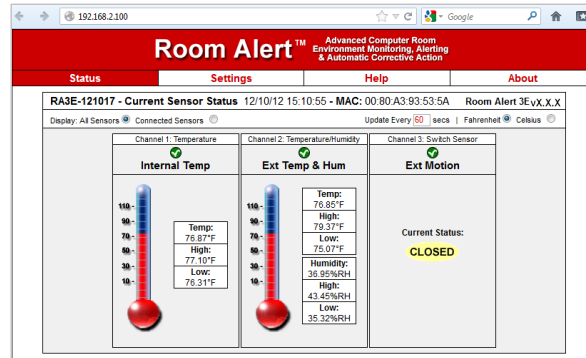
#### NOTE



Use only AVTECH's International Power Adapter. Others could damage the Room Alert 3E and void your warranty. If you don't have one, please visit our online store at [AVTECH.com](http://AVTECH.com).

## Step 2: Open your Room Alert 3E in your web browser . . .

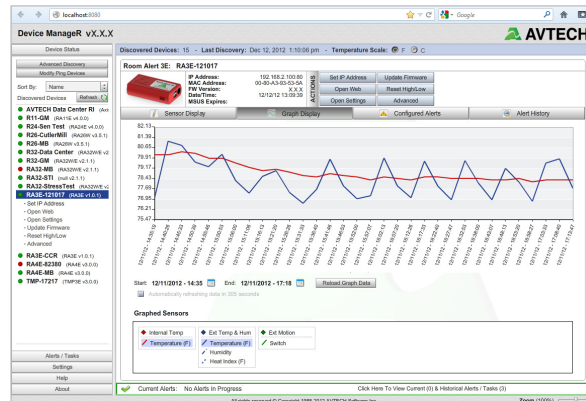
With the built-in interface.



- Enter your Room Alert 3E’s IP address in your web browser’s address bar to access the interface.

OR

With Device Manager for advanced functionality.



- Download and install AVTECH’s Device Manager via your customer account at [AVTECH.com/Downloads](http://AVTECH.com/Downloads).
- Launch it in your web browser at <http://localhost:8080>.

## Step 3: Connect Additional Components

If you purchased additional components that are compatible, connect them according to the instructional material included with them.

## Room Alert 3E

# How To Use Room Alert 3E's Web Interface

You may configure your Room Alert 3E through its built-in web interface. To access the interface, you may either:

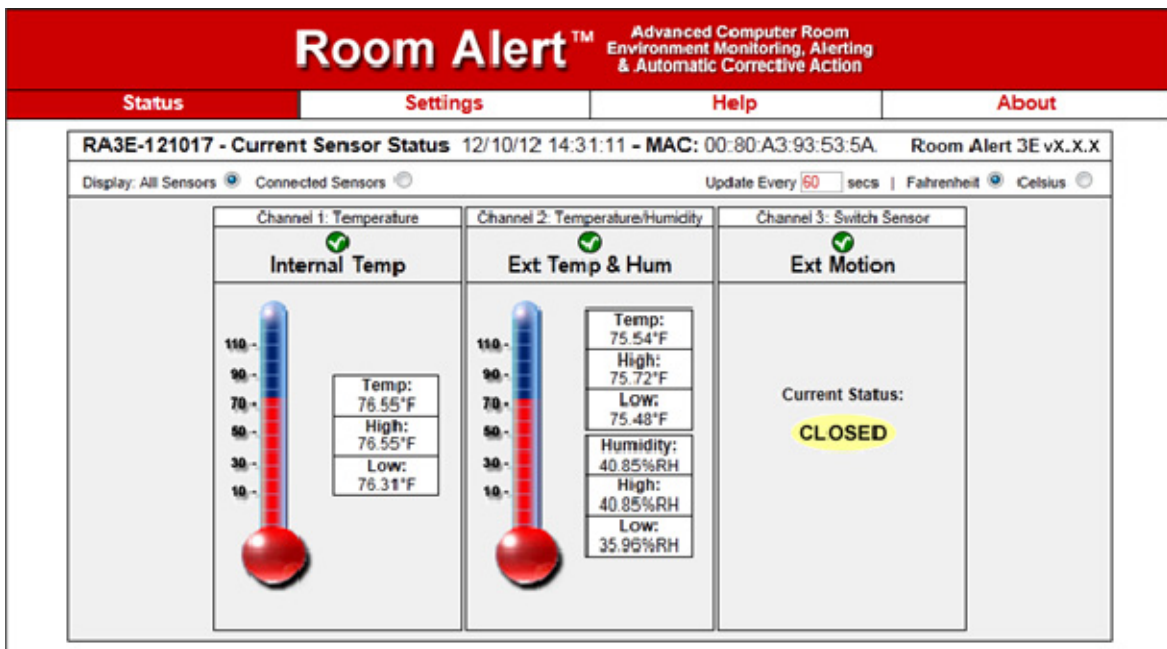
- Select your Room Alert 3E in Device Manager and click the “Open Web” button.
- or
- Type the IP address of your Room Alert 3E monitor directly into the address bar of your web browser.

Your Room Alert 3E's web interface has 4 tabs:

- Status
- Settings
- Help
- About

## Status

To view your Room Alert 3E's current sensor status, click **Status** in the navigation bar at the top of your screen.



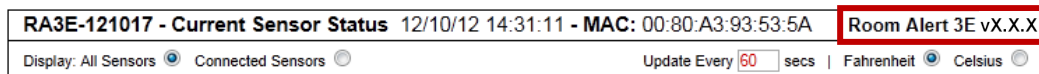
## Current Sensor Status Bar

Below the “Status” tab is the “Current Sensor Status Bar,” where you may view basic information about your Room Alert 3E and make temporary adjustments to the sensor display.

- You may find your Room Alert 3E’s name, current date & time, and MAC address here.



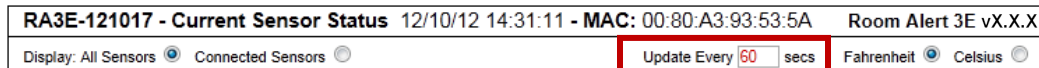
- To determine if your Room Alert 3E’s firmware is current, you may click **Room Alert 3E vX.X.X** at the right.



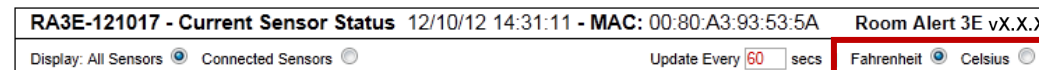
TIP

Your Room Alert 3E must be connected to the internet to check firmware versions.

- To temporarily modify the refresh interval of the “Status” screen while viewing, which is 60 seconds (i.e., every 1 minute) by default, you may enter a value in seconds in the “Update Every” field. Click outside the field to temporarily commit the change.



- To temporarily toggle the temperature scale between Fahrenheit (F) and Celsius (C), click **Fahrenheit** or **Celsius**.

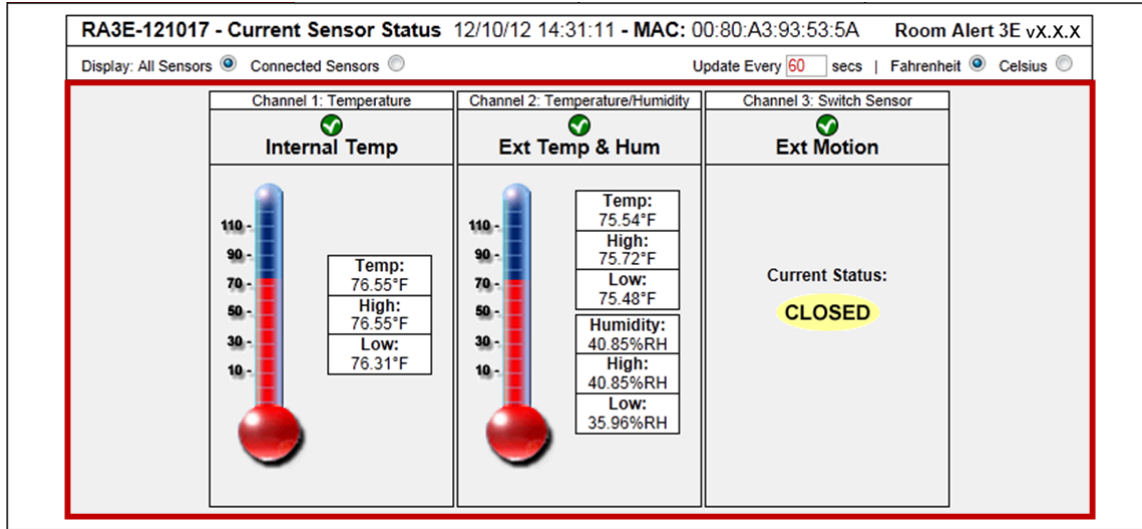


NOTE



Refer to the [Advanced](#) section in this manual for instructions on setting the default status page refresh rate and temperature scale for Room Alert 3E.

Sensor Display Area



In the main viewing pane of the “Status” tab is the “Sensor Display Area.” Here you may view the current readings for your sensors, which are displayed left to right as follows:

- Channel 1:  
Internal Temperature Sensor
- Channel 2:  
External Digital Sensor
- Channel 3:  
External Switch Sensor

Below the channels, you see the status icons and the labels for your sensors, which you may configure in **Settings** → **Sensors**.

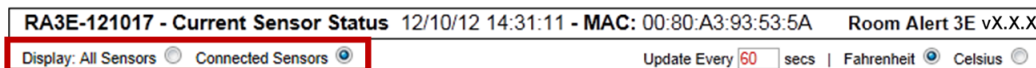
**Status Icons**

- Green circle with “✓” mark..... Sensor is in a clear state.
- Grey circle..... Sensor has no alarm threshold set.
- Red circle with “X” mark..... Sensor is in an alarm state.

**Display All Sensors / Connected Sensors**

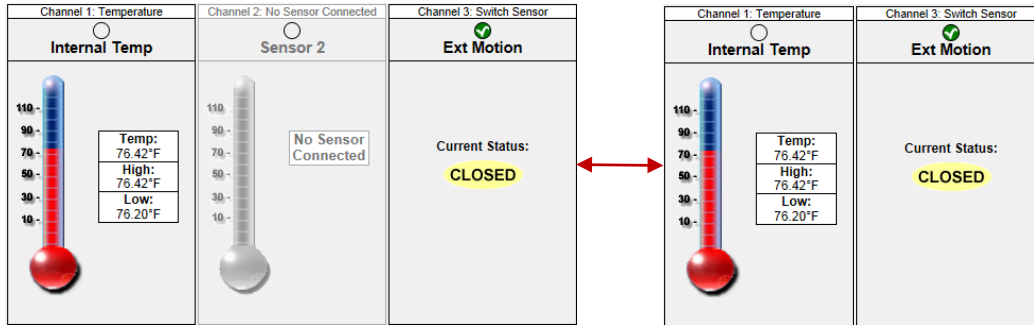
If you have no external digital sensor connected, you may temporarily hide Channel 2.

1. To hide the disconnected digital sensor, click **Connected Sensors** in the “Current Sensors Status Bar” as shown here.



2. To toggle the view back to all 3 sensor channels, click **All Sensors**.

The “Sensor Display Area” collapses and expands as shown below:



## Settings

To access your Room Alert 3E's settings, click **Settings** in the navigation bar at the top of your screen.

Status	Settings	Help	About
MAC Address: 00-80-A3-93-53-5A		Version: 1.0.1 X.X.X	
<b>Network Settings</b>			
<ul style="list-style-type: none"> <li>Network</li> <li>SMTP Email</li> <li>SNMP</li> <li>Sensors</li> <li>Alarm Options</li> <li>Security</li> <li>Advanced</li> <li>Save Settings</li> <li>Reset Defaults</li> </ul>	Device Name <input type="text" value="RA3E-121017"/>		
	IP Address Configuration <ul style="list-style-type: none"> <li><input checked="" type="radio"/> Obtain IP Address Automatically</li> <li>Auto Configuration Methods                         <ul style="list-style-type: none"> <li>BOOTP <input checked="" type="radio"/> Enable <input type="radio"/> Disable</li> <li>DHCP <input checked="" type="radio"/> Enable <input type="radio"/> Disable</li> <li>AutoIP <input checked="" type="radio"/> Enable <input type="radio"/> Disable</li> </ul> </li> <li><input type="radio"/> Use The Following IP Configuration                         <ul style="list-style-type: none"> <li>IP Address <input type="text"/></li> <li>Subnet Mask <input type="text"/></li> <li>Default Gateway <input type="text"/></li> <li>DNS Server IP <input type="text"/></li> </ul> </li> </ul>		
	Ethernet Configuration <ul style="list-style-type: none"> <li>MTU Size <input type="text" value="1024"/></li> <li>Auto Negotiate <input checked="" type="checkbox"/></li> <li>Speed <input checked="" type="radio"/> 100 Mbps <input type="radio"/> 10 Mbps</li> <li>Duplex <input checked="" type="radio"/> Full <input type="radio"/> Half</li> <li>Gratuitous ARP Broadcasts <input checked="" type="radio"/> Enabled <input type="radio"/> Disabled</li> </ul>		
	<input type="button" value="Accept Changes"/>		



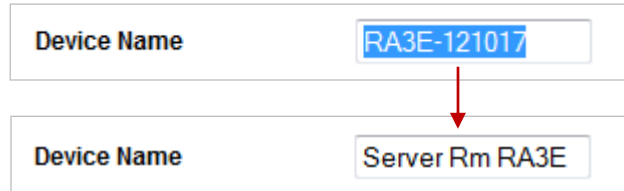
You'll see a prompt for your username and password whenever you click **Settings**. If you have not set up a password for your Room Alert 3E, simply click **OK** without entering anything.

## Room Alert 3E

### Network

Navigate to **Settings** → **Network** to open the “Network Settings” screen.

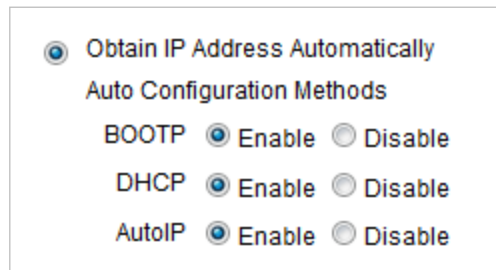
#### *Device Name*



To rename your Room Alert 3E:

3. Select the automatically-assigned name in “Device Name” and enter a new one of up to 15 alphanumeric characters.
4. Click **Accept Changes** at the bottom of your screen.
5. Click **Save Settings** in the navigation bar to the left of your screen.

#### *IP Address Configuration—DHCP*



To obtain an IP address automatically using DHCP:

1. Select **Obtain IP Address Automatically**.
2. Click **Accept Changes** at the bottom of your screen.
3. Click **Save Settings** in the navigation bar to the left of your screen.



### *IP Address Configuration—Static IP*

Use The Following IP Configuration

IP Address

Subnet Mask

Default Gateway

DNS Server IP

To assign a static IP address:

1. Select **Use The Following IP Configuration**.
2. In “IP Address,” enter the new static IP address.
3. In “Subnet Mask,” enter the subnet mask.
4. In “Default Gateway,” enter the gateway IP address.
5. In “DNS Server IP,” enter the DNS server IP address.
6. Click **Accept Changes** at the bottom of your screen.
7. Click **Save Settings** in the navigation bar to the left of your screen.



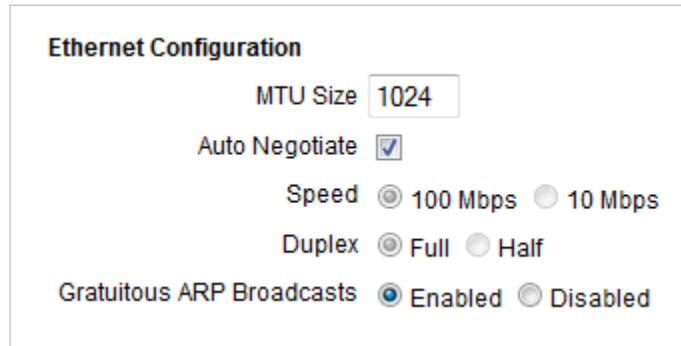
**TIP**

Make sure that you do not use an IP address that is already assigned to another device. Also, set the IP address within your current subnet range; otherwise, you may not be able to discover your Room Alert 3E.

## Room Alert 3E

### Ethernet Configuration

Typically, you may leave the “Ethernet Configuration” section at the defaults, which are shown below, for immediate use of Room Alert 3E.



The screenshot shows the 'Ethernet Configuration' settings. The 'MTU Size' is set to 1024. 'Auto Negotiate' is checked. 'Speed' is set to 100 Mbps. 'Duplex' is set to Full. 'Gratuitous ARP Broadcasts' is set to Enabled.

Setting	Value
MTU Size	1024
Auto Negotiate	<input checked="" type="checkbox"/>
Speed	<input checked="" type="radio"/> 100 Mbps <input type="radio"/> 10 Mbps
Duplex	<input checked="" type="radio"/> Full <input type="radio"/> Half
Gratuitous ARP Broadcasts	<input checked="" type="radio"/> Enabled <input type="radio"/> Disabled

However, if you connect your Room Alert 3E to a managed switch that controls your network traffic, you may need to change these settings:

1. In “MTU Size,” you may leave the default, 1024, or enter a value as low as 512.
2. You may uncheck “Auto Negotiate” and choose:
  - For “Speed,” 100 Mbps or 10 Mbps.
  - For “Duplex,” “Full” or “Half.”
3. In “Gratuitous ARP Broadcasts,” you may leave the default, “Enabled,” or choose “Disabled.”
4. Click **Accept Changes** at the bottom of your screen.
5. Click **Save Settings** in the navigation bar to the left of your screen.

## SMTP Email

You may configure your Room Alert 3E to send alerts via email and email-to-SMS.

Navigate to **Settings** → **SMTP Email** to open the “Email Settings” screen.

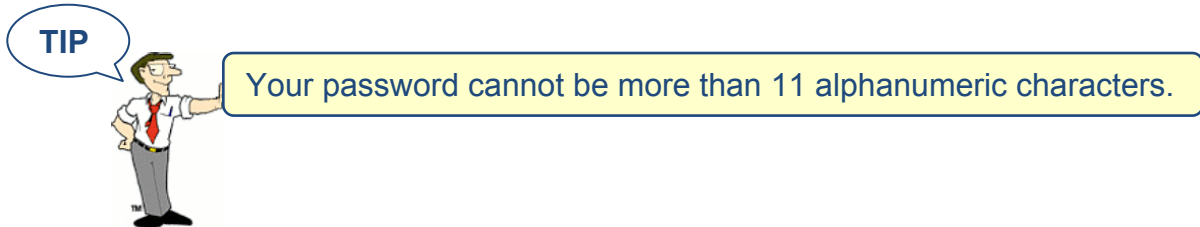
Status	Settings	Help	About
MAC Address: 00-80-A3-93-53-5A	Version: X.X.X		
<b>Email Settings</b>			
<b>Network</b>	Email Enabled <input checked="" type="checkbox"/>		
<b>SMTP Email</b>	Email Footer Enabled <input checked="" type="checkbox"/>		
<b>SNMP</b>	Use SMS <input type="checkbox"/>		
<b>Sensors</b>	Mail Server Port <input type="text" value="25"/>	Timeout <input type="text" value="5"/>	
<b>Alarm Options</b>	Mail Server <input type="text" value="mail.yourco.com"/> * Domain Name or IP		
<b>Security</b>	Return Address (From) <input type="text" value="RoomAlert3E@YourCo.com"/>		
<b>Advanced</b>	Display URL <input type="text" value="192.168.123.16:80"/>		
<b>Save Settings</b>	<hr/>		
<b>Reset Defaults</b>	<b>Authentication (optional)</b>		
	Enable Authentication <input checked="" type="checkbox"/>		
	Username <input type="text" value="RoomAlert3E@YourCo.com"/>		
	Password <input type="password" value="●●●●●●●●"/> * Max 11 Characters		
	<hr/>		
	<b>Email Recipients (Separated By Comma)</b>		
	Email Addresses <input type="text" value="ITMgr@YourCo.com, 1235551900@ATT.bt.net, FacilitiesDept@Your"/>		
	<input type="button" value="Send Test Email"/>		
	<input type="button" value="Accept Changes"/>		

1. Check **Email Enabled**.
2. Leave the **Email Footer Enabled** checked to include AVTECH contact information with email messages.
3. Check **Use SMS** to send a shorter email with a reduced character count.
4. In “Mail Server Port,” enter your mail server’s SMTP port. The default is 25, a commonly-used port.
5. In “Timeout,” you may leave the default, 5 seconds, or enter another interval.
6. In the “Mail Server” field, enter the domain name or IP address of your mail server.
7. In the “Return Address (From)” field, enter an email address that resides on your mail server. This is the address alert messages will come from.
8. In “Display URL,” you may leave the default, which is the IP address and port of your Room Alert 3E, or overwrite it with another IP address.

## Room Alert 3E

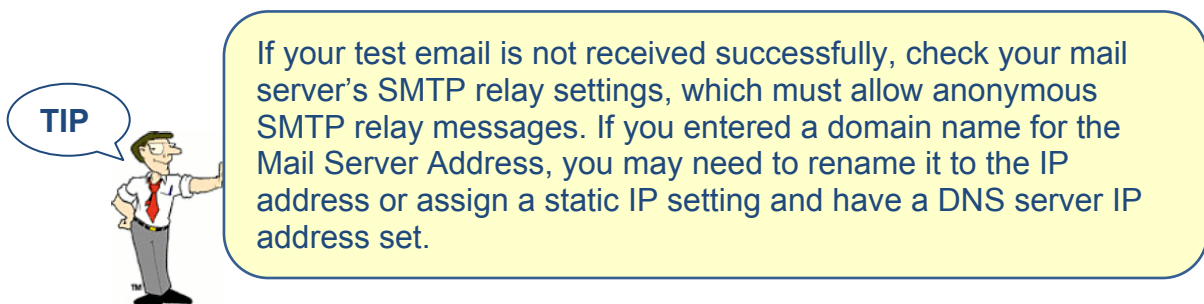
### *Authentication (Optional)*

9. If your mail server requires SMTP authentication, check **Enable Authentication**.
10. In “Username” and “Password,” enter a valid username and password for your mail server that will facilitate authentication.



### *Email Recipients (Separated By Comma)*

11. In “Email Addresses,” enter the email and email-to-SMS addresses that you’d like to send alerts to. Separate each address with a comma.
  - Email address: [ITMgr@YourCo.com](mailto:ITMgr@YourCo.com)
  - Email-to-SMS address: [1235551900@ATT.txt.net](mailto:1235551900@ATT.txt.net)
  - Addresses separated by commas: [ITMgr@YourCo.com](mailto:ITMgr@YourCo.com), [1235551900@ATT.txt.net](mailto:1235551900@ATT.txt.net), etc.
12. Click **Send Test Email**. This button will automatically save any changes made to the “SMTP Email” tab before sending a test email message.
13. Click **Accept Changes** at the bottom of your screen.
14. Click **Save Settings** in the navigation bar to the left of your screen.



## Simple Network Management Protocol (SNMP)

Because your Room Alert 3E is fully SNMP-compliant, you have the option to monitor it with a 3<sup>rd</sup>-party monitoring application capable of performing SNMP queries. You may configure the Room Alert 3E to send SNMP Traps in response to a change in alarm states to up to three host systems running 3<sup>rd</sup>-party SNMP monitoring applications.

If you use a 3<sup>rd</sup>-party SNMP monitoring application:

- Obtain the Room Alert 3E MIB files through your customer account at [AVTECH.com/Downloads](http://AVTECH.com/Downloads) and load them into your SNMP monitoring application. Otherwise, your application cannot properly translate the data it receives in the SNMP Trap.
- Ensure that your application uses SNMPv1.
- Note that your Room Alert communicates with your SNMP monitoring application using the standard port for the SNMP protocol, 161.

Navigate to **Settings** → **SNMP** to open the “SNMP Settings” screen.

Status	Settings	Help	About
MAC Address:	00-80-A3-93-53-5A	Version:	X.X.X
<b>SNMP Settings</b>			
<b>Network</b>	SNMP Configuration		
<b>SMTP Email</b>	Community Name	public	<input type="checkbox"/> Use 2 digit SNMP
<b>SNMP</b>	Contact (sysContact)	<input type="text"/>	
<b>Sensors</b>	Location (sysLocation)	<input type="text"/>	
<b>Alarm Options</b>	SNMP Trap Sending Configuration		
<b>Security</b>	Trap Send IP 1	<input type="text" value="0.0.0.0"/>	
<b>Advanced</b>	Trap Send IP 2	<input type="text" value="0.0.0.0"/>	
<b>Save Settings</b>	Trap Send IP 3	<input type="text" value="0.0.0.0"/>	
<b>Reset Defaults</b>	<input type="button" value="Accept Changes"/>		

## Room Alert 3E

### SNMP Configuration

<b>SNMP Configuration</b>		
Community Name	<input type="text" value="public"/>	<input type="checkbox"/> Use 2 digit SNMP
Contact (sysContact)	<input type="text" value="IT Manager"/>	
Location (sysLocation)	<input type="text" value="Data Center"/>	

To begin configuring your Room Alert 3E for SNMP:

1. In “Community Name,” you may leave the default SNMP protocol community name—“public”—or enter a new name.

**TIP**



The community name you assign here must match the one in your 3<sup>rd</sup>-party SNMP monitoring application.

2. You may leave “Contact (sysContact)” blank or enter a person’s name to specify who is receiving the information.
3. You may leave “Location (sysLocation)” blank or enter the location of your Room Alert 3E monitor.
4. You may click **Use 2 digit SNMP** if you prefer to receive values in 2-digit rather than 4-digit format.

**TIP**



Room Alert 3E sends values to your 3<sup>rd</sup>-party SNMP monitoring application in 4-digit format by default. 78.55° F, for example, appears as 7855. In 2-digit format, your values are truncated, not rounded to the nearest number. In this example, 78.55 would appear as 78.

5. Click **Accept Changes** at the bottom of your screen.
6. Click **Save Settings** in the navigation bar to the left of your screen.

### SNMP Trap Sending Configuration

You may configure your Room Alert 3E to send SNMP Traps in response to a change in alarm state to up to three host systems running 3<sup>rd</sup>-party SNMP monitoring applications. Each host system you enter in these fields will receive the same SNMP Traps simultaneously.

SNMP Trap Sending Configuration	
Trap Send IP 1	<input type="text" value="192.168.2.100"/>
Trap Send IP 2	<input type="text" value="192.168.2.101"/>
Trap Send IP 3	<input type="text" value="0.0.0.0"/>

To configure your Room Alert to send SNMP Traps:

1. In “Trap Send IP 1,” enter the IP address of the host system that runs your 3<sup>rd</sup>-party SNMP monitoring application.
2. In “Trap Sent IP 2” and “Trap Send IP 3,” you may enter the IP addresses of other host systems that run 3<sup>rd</sup>-party SNMP monitoring applications, or leave the default, 0.0.0.
3. Click **Accept Changes** at the bottom of your screen.
4. Click **Save Settings** in the navigation bar to the left of your screen.

### Sensors

You may configure alert thresholds for the internal temperature, external digital and external switch sensor connected to your Room Alert 3E in this screen. Your Room Alert 3E sends alerts in response to changes in these alert thresholds.



For more information about AVTECH sensors and accessories, please refer to the [Appendix](#) at the back of this manual or visit the [Sensors and Accessories](#) sections of [AVTECH.com](http://AVTECH.com).

## Room Alert 3E

Navigate to **Settings** → **Sensors** to open the “Sensor Settings” screen.

This sample screen shows all three sensors connected to the Room Alert 3E before they have been configured.

Status	Settings	Help	About															
MAC Address: 00-80-A3-93-53-5A	Version: X.X.X																	
<b>Network</b>	<b>Sensor Settings</b>																	
<b>SMTP Email</b>	<b>Sensor 1 Alarm Configuration</b>		Sensor Type: Temperature (Fahrenheit)															
<b>SNMP</b>	<table border="1"><thead><tr><th>Sensor Label</th><th>Alarm On</th><th>High</th><th>Low</th><th>Adjust</th></tr></thead><tbody><tr><td>Sensor 1</td><td>Temperature (°F)</td><td>0</td><td>0</td><td>0</td></tr></tbody></table>	Sensor Label	Alarm On	High	Low	Adjust	Sensor 1	Temperature (°F)	0	0	0							
Sensor Label	Alarm On	High	Low	Adjust														
Sensor 1	Temperature (°F)	0	0	0														
<b>Sensors</b>	<b>Sensor 2 Alarm Configuration</b>		Sensor Type: Temp/Humidity (Fahrenheit)															
<b>Alarm Options</b>	<table border="1"><thead><tr><th>Sensor Label</th><th>Alarm On</th><th>High</th><th>Low</th><th>Adjust</th></tr></thead><tbody><tr><td>Sensor 2</td><td>Temperature (°F)</td><td>0</td><td>0</td><td>0</td></tr><tr><td><a href="#">Monitor Heat Index</a> <input type="checkbox"/></td><td>Humidity (%RH)</td><td>0</td><td>0</td><td>0</td></tr></tbody></table>	Sensor Label	Alarm On	High	Low	Adjust	Sensor 2	Temperature (°F)	0	0	0	<a href="#">Monitor Heat Index</a> <input type="checkbox"/>	Humidity (%RH)	0	0	0		
Sensor Label	Alarm On	High	Low	Adjust														
Sensor 2	Temperature (°F)	0	0	0														
<a href="#">Monitor Heat Index</a> <input type="checkbox"/>	Humidity (%RH)	0	0	0														
<b>Security</b>	<b>Sensor 3 Alarm Configuration</b>		Sensor Type: Switch															
<b>Advanced</b>	<table border="1"><thead><tr><th>Sensor Label</th><th>Alarm On</th></tr></thead><tbody><tr><td>Sensor 3</td><td>Closed</td></tr></tbody></table>	Sensor Label	Alarm On	Sensor 3	Closed													
Sensor Label	Alarm On																	
Sensor 3	Closed																	
<b>Save Settings</b>	<b>Advanced Sensor Configuration</b>																	
<b>Reset Defaults</b>	Trigger Alarm If Sensor Is Disconnected? <input type="checkbox"/>																	
	<input type="button" value="Accept Changes"/>																	

### *Sensor 1 Alarm Configuration (Internal Temperature Sensor)*

You may configure alert thresholds for the Internal Temperature Sensor in the “Sensor 1 Alarm Configuration” fields. The temperature range is -40° to 185° F (-40° to 85° C).

Sensor 1 Alarm Configuration		Sensor Type: Temperature (Fahrenheit)												
<table border="1"><thead><tr><th>Sensor Label</th><th>Alarm On</th><th>High</th><th>Low</th><th>Adjust</th></tr></thead><tbody><tr><td>Internal Temp</td><td>Temperature (°F)</td><td>80</td><td>60</td><td>0</td></tr></tbody></table>	Sensor Label	Alarm On	High	Low	Adjust	Internal Temp	Temperature (°F)	80	60	0				
Sensor Label	Alarm On	High	Low	Adjust										
Internal Temp	Temperature (°F)	80	60	0										

1. In “Sensor Label,” you may leave the default label, “Sensor 1,” or rename it to something more descriptive, such as “Internal Temp.”
2. The “Alarm On” field is set at the default of “Temperature (F).”





Refer to the [Advanced](#) section in this manual for instructions on setting the default temperature scale.

3. Enter values in the “High” and “Low” field to set high and low temperature thresholds.
4. Enter a value in the “Adjust” field to calibrate the Internal Temperature Sensor if its reading differs from a known temperature value at that location.
5. Click **Accept Changes** at the bottom of your screen.
6. Click **Save Settings** in the navigation bar to the left of your screen.

**Sensor 2 Alarm Configuration (External Digital Sensor)**

You may configure alert thresholds for an external digital sensor in the “Sensor 2 Alarm Configuration” fields.



The digital port also takes a Light Tower & Relay Adapter; however, you do not configure Light Tower or Relay options here—refer instead to the [Alarm Options](#) section in this manual.

In this example, we’ll configure an external Digital Temperature & Humidity Sensor:

Sensor 2 Alarm Configuration		Sensor Type: Temp/Humidity (Fahrenheit)		
Sensor Label	Alarm On	High	Low	Adjust
Temp & Humidity	Temperature (°F)	80	60	0
<a href="#">Monitor Heat Index</a> <input type="checkbox"/>	Humidity (%RH)	50	30	0

1. In “Sensor Label,” you may leave the default label, “Sensor 2,” or rename it to something more descriptive, such as “Temp & Humidity.”
2. The “Alarm On” fields automatically match the type of sensor you connect. In this example, the “Alarm On” settings are Temperature and Humidity.

## Room Alert 3E

3. Enter values in the “High” and “Low” field to set high and low thresholds. Your Room Alert 3E will send an alert email or email-to-SMS in response to these temperatures.
4. Enter a value in the “Adjust” field to calibrate your digital sensor if its reading differs from a known value at that location.
5. Click **Accept Changes** at the bottom of your screen.
6. Click **Save Settings** in the navigation bar to the left of your screen.



**TIP**

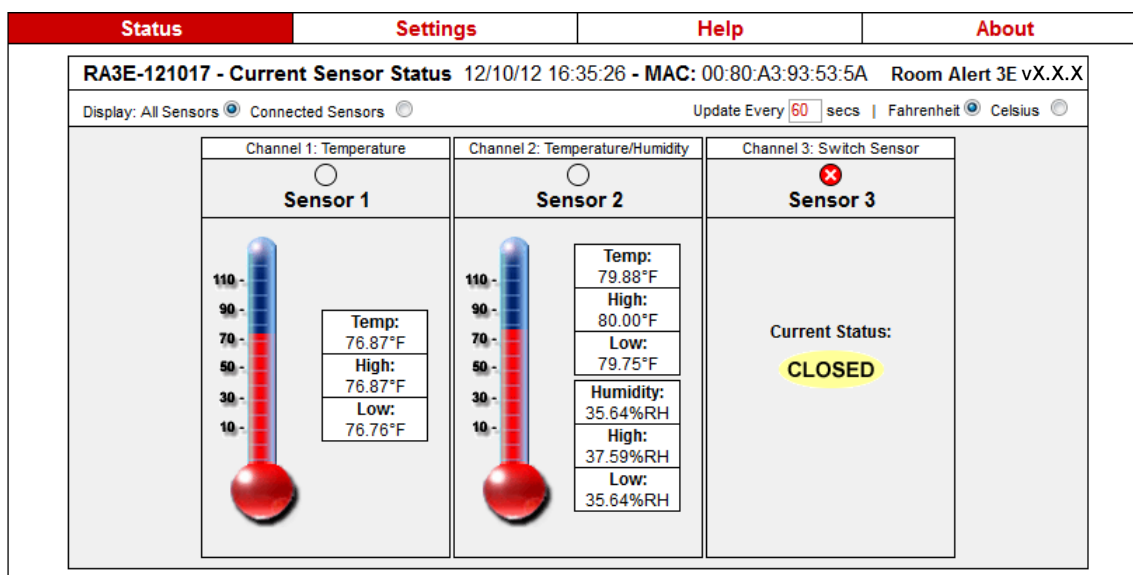
The options in these fields vary slightly depending on the type of digital sensor you connect. Notice, for example, that the Digital Temperature & Humidity Sensor has a “Monitor Heat Index” option.

### Sensor 3 Alarm Configuration (External Switch Sensor)

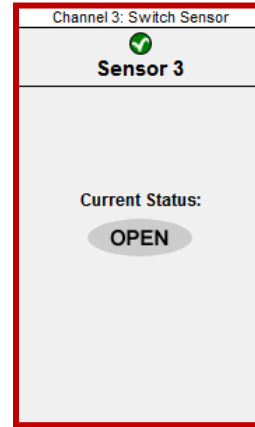
You may configure the alert state for an external switch sensor in the “Sensor 3 Alarm Configuration” fields.

Your Room Alert 3E monitors your switch sensor for “Open” or “Closed” status. After you connect your switch sensor—and before you configure it—determine whether its normal state is “Open” or “Closed” by looking at the “Status” page of the web interface:

1. Click the **Status** tab at the top of your screen in the web interface.
2. Look at the current status of “Channel 3: Switch Sensor.” It should show the normal sensor state, which is “Open” or “Closed.” This example shows normal state as “Closed.”

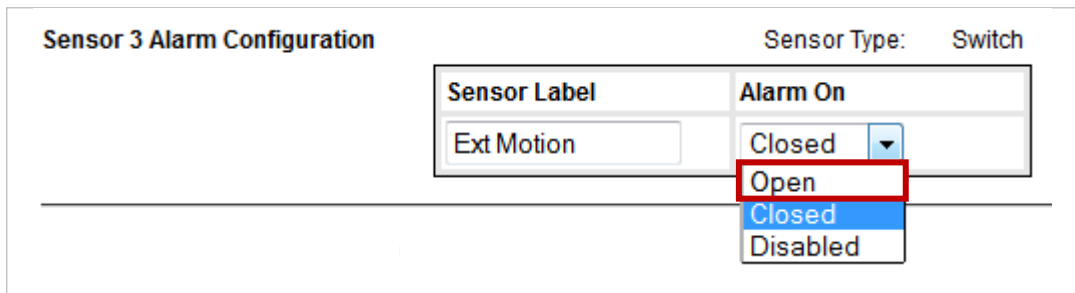


- Now put the sensor into an alarm state. (To put a Motion Sensor into an alarm state, for example, wave your hand in front of it.) Look at the current status at the same time. You should see the current status switch to the opposite of normal. In this example, if normal is “Closed,” you see the alarm state as “Open.”



Now that you’ve checked what “Open” and “Closed” mean on your switch sensor, navigate to **Settings** → **Sensors** to configure your options in “Sensor 3 Alarm Configuration”:

- In “Sensor Label,” you may leave the default, “Sensor 3,” or enter something more descriptive, such as “Ext Motion.”
- In “Alarm On,” select the alarm state (“Open” or “Closed”), which you determined on the “Status” page. In our example, the alarm state is “Open.”



- Click **Accept Changes** at the bottom of your screen.
- Click **Save Settings** in the navigation bar to the left of your screen.



**TIP**

If you don’t connect a switch sensor to your Room Alert 3E, choose **Disabled** from the “Alarm On” drop-down menu to avoid confusion or false alerts.

## Room Alert 3E

### Advanced Sensor Configuration

Check **Trigger Alarm If Sensor Is Disconnected?** if you want to receive an alert if the external digital sensor becomes disconnected from the Room Alert 3E. This check box is blank by default.

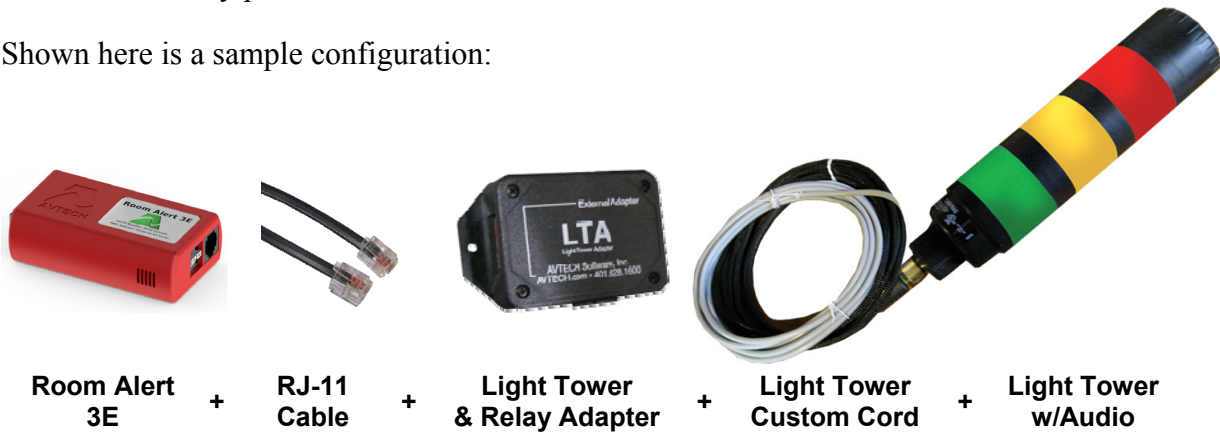
**Advanced Sensor Configuration**

Trigger Alarm If Sensor Is Disconnected?

### Alarm Options

You need to configure the “Alarm Options” page only if you use a Light Tower & Relay Adapter with your Room Alert 3E, which gives you the option to add an AVTECH Light Tower, Light Tower w/Audio or Relay Switch Sensor. You may also connect a low-voltage device directly to the available relay port.

Shown here is a sample configuration:



**NOTE**



The Light Tower w/Audio in this configuration can be replaced with a standard Light Tower or Relay Switch Sensor. For more information about AVTECH sensors and accessories, please refer to the [Appendix](#) at the back of this manual or visit the Sensors & Accessories sections of [AVTECH.com](http://AVTECH.com).

Navigate to **Settings** → **Alarm Options** to open the “Alarm Options” screen. This sample screen shows the options for a Light Tower w/Audio before it has been configured.

Status	Settings	Help	About
MAC Address:	00-80-A3-93-53-5A	Version:	X.X.X
<b>Alarm Options</b>			
<b>Signal Tower / Relay Configuration</b>			
Connected Signal Tower / Relay <span>Red/Yellow/Green w/Audio</span>			
Alarm Clear Action <input type="checkbox"/> Allow Signal Tower / Relay Off On Alarm Clear			
<b>Action To Perform When Alarms Occur</b>			
Red LED <input type="checkbox"/> OFF			
Yellow LED <input type="checkbox"/> OFF			
Green LED <input type="checkbox"/> OFF			
Audio 1 <input type="checkbox"/> OFF			
Audio 2 <input type="checkbox"/> OFF			
<b>Action To Perform When Alarms Clear</b>			
Red LED <input type="checkbox"/> OFF			
Yellow LED <input type="checkbox"/> OFF			
Green LED <input type="checkbox"/> OFF			
Audio 1 <input type="checkbox"/> OFF			
Audio 2 <input type="checkbox"/> OFF			
<input type="button" value="Accept Changes"/>			

1. In “Connected Light Tower / Relay,” select from the 4 choices in the drop-down menu.

**Signal Tower / Relay Configuration**

Connected Signal Tower / Relay No Signal Tower / Relay Connected

Alarm Clear Action No Signal Tower / Relay Connected On Alarm Clear

Red/Green No Audio

Red/Yellow/Green w/Audio

Relay



**TIP**

The options on this screen vary somewhat depending on the device you select from the drop-down list.

## Room Alert 3E

2. If you want to enable the Light Tower or Relay Switch Sensor to perform an action when your Room Alert 3E returns to a “clear” state, click **Alarm Clear Action**.

**Signal Tower / Relay Configuration**

Connected Signal Tower / Relay

Alarm Clear Action  Allow Signal Tower / Relay Off On Alarm Clear

3. In “Action To Perform When Alarms Occur,” you may leave the default “OFF,” or click the check box to select “ON” for each item.

**Action To Perform When Alarms Occur**

Red LED	<input checked="" type="checkbox"/>	ON
Yellow LED	<input type="checkbox"/>	OFF
Green LED	<input type="checkbox"/>	OFF
Audio 1	<input checked="" type="checkbox"/>	ON
Audio 2	<input type="checkbox"/>	OFF

4. In “Action To Perform When Alarms Clear,” you may leave the default, “OFF,” or click the check box to select “ON” for each item.

**Action To Perform When Alarms Clear**

Red LED	<input type="checkbox"/>	OFF
Yellow LED	<input type="checkbox"/>	OFF
Green LED	<input checked="" type="checkbox"/>	ON
Audio 1	<input type="checkbox"/>	OFF
Audio 2	<input type="checkbox"/>	OFF

5. Click **Accept Changes** at the bottom of your screen.
6. Click **Save Settings** in the navigation bar to the left of your screen.

## Security

By default, the Room Alert 3E does not require log in credentials; you may, however, create a password for your Room Alert 3E for extra security.

Status	Settings	Help	About
MAC Address: 00-80-A3-93-53-5A	Version: X.X.X		
<b>Security Settings</b>			
<b>Network</b>	Web Password <input type="text"/>		
<b>SMTP Email</b>	Confirm Password <input type="text"/>		
<b>SNMP</b>	<input type="button" value="Accept Changes"/>		
<b>Sensors</b>			
<b>Alarm Options</b>			
<b>Security</b>			
<b>Advanced</b>			
<b>Save Settings</b>			
<b>Reset Defaults</b>			

Navigate to **Settings** → **Security** to open the “Security Settings” screen.

1. In “Web Password,” you may create a log in password of up to 15 alphanumeric characters for your Room Alert 3E.

**TIP**



Use only letters and numbers in your log in password—no special characters, please.

2. Re-enter the password in the “Confirm Password” field to verify.
3. Click **Accept Changes** at the bottom of your screen.
4. Click **Save Settings** in the navigation bar to the left of your screen.

**NOTE**



If you forget your password, you can reset your Room Alert 3E settings to the factory defaults. Please see the [How To Reset Room Alert 3E To Factory Defaults](#) section of this manual for more information. There is no other alternative.

## Advanced

You may configure a number of advanced options here, including the default temperature scale (Fahrenheit or Celsius), status page settings, Device Manager “Push” settings, time & date, and trace output.

Navigate to **Settings** → **Advanced** to open the “Advanced Settings” screen.

Status	Settings	Help	About
MAC Address: 00-80-A3-93-53-5A      Version: X.X.X			
<b>Advanced Settings</b>			
<b>Network</b> <b>SMTP Email</b> <b>SNMP</b> <b>Sensors</b> <b>Alarm Options</b> <b>Security</b> <b>Advanced</b>  <b>Save Settings</b> <b>Reset Defaults</b>	<b>Temperature Scale Configuration</b> <input checked="" type="radio"/> Fahrenheit <input type="radio"/> Celsius		
	<b>Status Page Configuration</b> Refresh Rate (seconds) <input type="text" value="60"/> HTTP Port <input type="text" value="80"/>		
	<b>Device Manager Push Configuration</b> Enable Device Manager Push <input type="checkbox"/> Server IP Address <input type="text" value="0.0.0.0"/> Server Port <input type="text" value="8080"/> Push Interval <input type="text" value="1 Minute"/>		
	<b>Time &amp; Date Configuration</b> Time Zone <input type="text" value="(GMT) Greenwich Mean Time (London, Lisbon)"/> Time Display <input type="text" value="24 hour"/> Time Format <input type="text" value="MM/DD/YY Hour:Minute:Second"/> Daylight Savings <input type="checkbox"/> Adjust For Daylight Saving Time (+1 hr) Time Server IP <input type="text" value="198.82.1.201"/> Time Server Auto Refresh <input type="text" value="24 Hours"/>		
	<b>Trace Configuration</b> Enable Tracing <input type="checkbox"/> Trace Port <input type="text" value="143"/>		
	<input type="button" value="Accept Changes"/>		



### *Temperature Scale Configuration*

You may select the default temperature scale for your Room Alert 3E here.

**Temperature Scale Configuration**

Fahrenheit    
  Celsius

1. Select **Fahrenheit** or **Celsius**.
2. Click **Accept Changes** at the bottom of your screen.
3. Click **Save Settings** in the navigation bar to the left of your screen.

### *Status Page Configuration*

You may set defaults for the “Status” screen here.

**Status Page Configuration**

Refresh Rate (seconds)

HTTP Port

1. In “Refresh Rate (seconds),” enter the number of seconds you would like the “Status” screen to refresh at. You may enter a value from 1 to 65535. The default is 60 seconds (i.e., every 1 minute).
2. In “HTTP Port,” you may change the port number your web browser uses to connect to your Room Alert’s web interface. It uses port 80 by default.
3. Click **Accept Changes** at the bottom of your screen.
4. Click **Save Settings** in the navigation bar to the left of your screen.

### *Device ManageR Push Configuration*

By default, Device ManageR queries your Room Alert 3E for sensor values at defined intervals. However, you may configure your Room Alert 3E to proactively send sensor updates to Device ManageR by enabling “Device ManageR Push.”

Enabling “Device ManageR Push” is an advantage for two reasons:

- Your Room Alert 3E can communicate with Device ManageR without triggering any firewalls between the two. Firewalls typically allow out-going connections while blocking in-coming connections.

## Room Alert 3E

- Your Room Alert 3E can immediately send an update to Device Manager when it detects an alarm, regardless of any intervals you have configured either in this section or in the Device Manager discovery interval.

**Device Manager Push Configuration**  
Enable Device Manager Push   
Server IP Address   
Server Port   
Push Interval

To enable Push to Device Manager from your Room Alert 3E:

1. Select **Enable Device Manager Push**.
2. In “Server IP Address,” enter the IP address of Device Manager’s host system.
3. In “Server Port,” enter the port Device Manager uses. The default is 8080.
4. In “Push Interval,” choose the number of minutes you would like between pushes from the drop-down list.
5. Click **Accept Changes** at the bottom of your screen.
6. Click **Save Settings** in the navigation bar to the left of your screen.

### *Time & Date Configuration*

You may set the time and date defaults for your Room Alert 3E here.

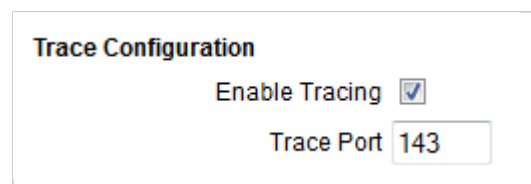
**Time & Date Configuration**  
Time Zone   
Time Display   
Time Format   
Daylight Savings  Adjust For Daylight Saving Time (+1 hr)  
Time Server IP   
Time Server Auto Refresh

1. In “Time Zone,” select your time zone from the drop-down list. Greenwich Mean Time (GMT) is the default.
2. In “Time Display,” you may select the 12- or 24-hour format from the drop-down list. The 24-hour setting is the default.

3. In “Time Format,” you may select either MM/YY/DD or DD/YY/MM format. Month first is the default.
4. Select **Daylight Savings** if you would like your Room Alert 3E time setting to compensate by +1 hour for daylight savings time.
5. In “Time Server IP,” you may leave the default of 198.82.1.201 or enter the IP address of another NTP time server on your network.
6. In “Time Server Auto Refresh,” select how often you would like your Room Alert 3E to synchronize automatically with the time server from the drop-down list. The 24 hour setting is the default. You may disable synchronization by selecting “Disabled” from the drop-down list.
7. Click **Accept Changes** at the bottom of your screen.
8. Click **Save Settings** in the navigation bar to the left of your screen.

### *Trace Configuration*

You may configure your Room Alert 3E for trace output, which is useful for troubleshooting. Trace output shows the communication between your Room Alert 3E and your mail server, as well as other information, such as the current firmware version, IP address, MAC address, and requests to web pages.



The screenshot shows a configuration window titled "Trace Configuration". It contains two settings: "Enable Tracing" with a checked checkbox, and "Trace Port" with a text input field containing the number "143".

To configure trace output:

1. Select **Enable Tracing**.
2. In “Trace Port,” leave the default, 143, unless your network blocks that port.
3. Click **Accept Changes** at the bottom of your screen.
4. Click **Save Settings** in the navigation bar to the left of your screen.
5. Click “View Tracing Output” to open a trace window.
6. When the trace window loads, click **Connect** to begin viewing the live trace output.

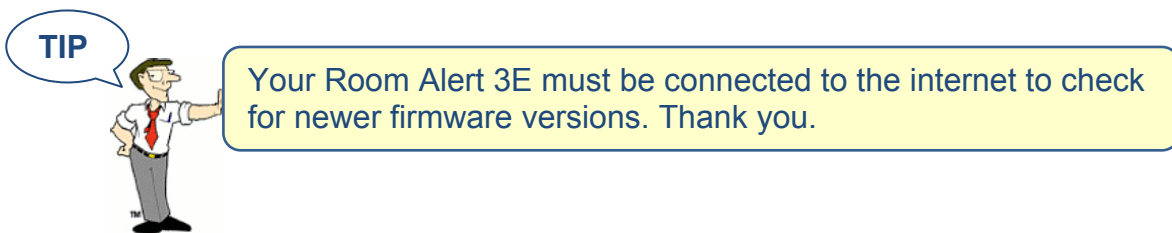
## Room Alert 3E

### Help

Click the **Help** tab to open the “Room Alert 3E Help” screen, which provides helpful links and contact information for AVTECH support resources.

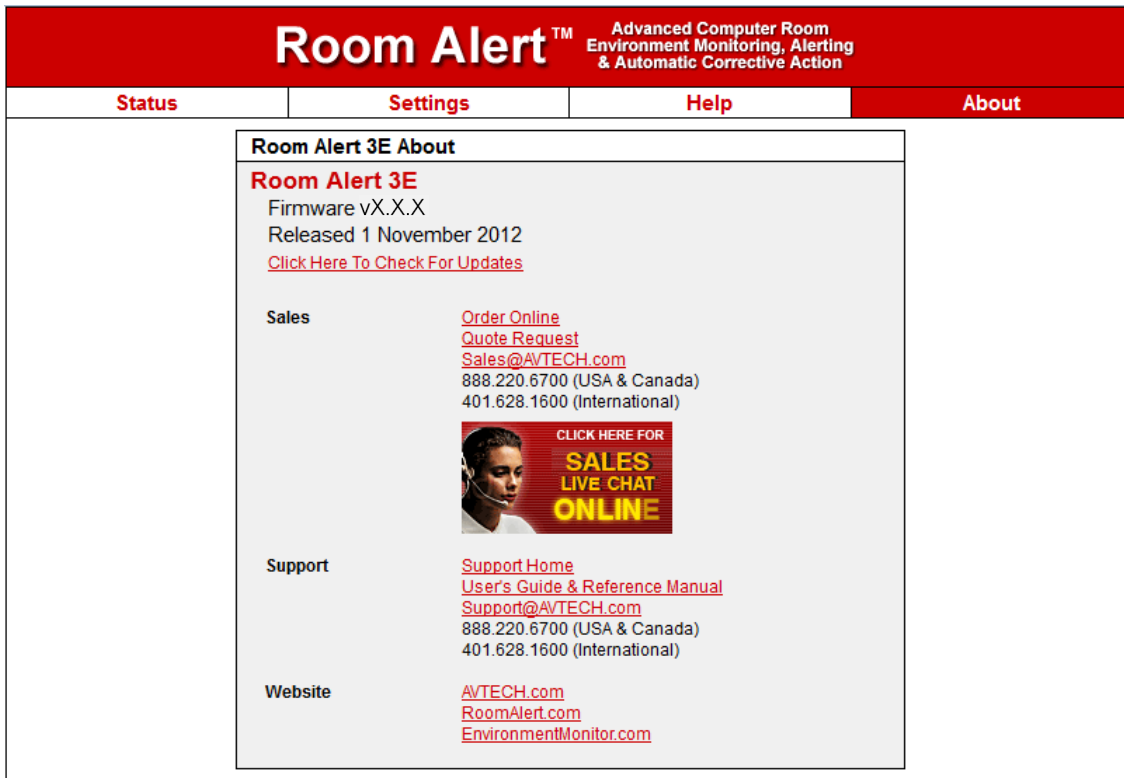
Room Alert 3E™ Advanced Computer Room Environment Monitoring, Alerting & Automatic Corrective Action			
Status	Settings	Help	About
<b>Room Alert 3E Help</b>			
<b>Room Alert 3E</b> Firmware vX.X.X Released 1 November 2012 <a href="#">Click Here To Check For Updates</a>			
<b>Support Resources</b>	<a href="#">User's Guide &amp; Reference Manual</a> <a href="#">Frequently Asked Questions</a> <a href="#">Application Notes</a> <a href="#">Support Center</a> <a href="#">Downloads</a>		
<b>Live Chat</b>			
<b>Email Support</b>	<a href="mailto:Support@AVTECH.com">Support@AVTECH.com</a>		
<b>Phone Support</b>	888.220.6700 (USA & Canada) 401.628.1600 (International) Mon-Fri 9 AM - 5 PM EST		

You may find the version number and release date of the firmware that is installed on your Room Alert 3E on this screen. To check if your Room Alert 3E has the most current version, click **Click Here To Check For Updates**.



## About

Click the **About** tab to open the “Room Alert 3E About” screen, which provides helpful links and contact information for AVTECH sales and support resources.



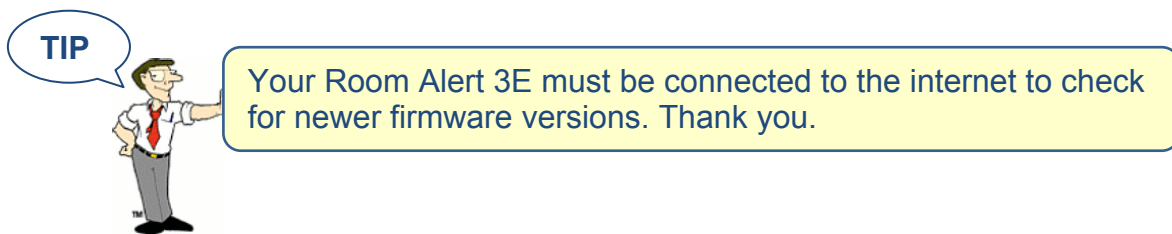
**Room Alert 3E**  
 Firmware vX.X.X  
 Released 1 November 2012  
[Click Here To Check For Updates](#)

**Sales**  
[Order Online](#)  
[Quote Request](#)  
[Sales@AVTECH.com](mailto:Sales@AVTECH.com)  
 888.220.6700 (USA & Canada)  
 401.628.1600 (International)

**Support**  
[Support Home](#)  
[User's Guide & Reference Manual](#)  
[Support@AVTECH.com](mailto:Support@AVTECH.com)  
 888.220.6700 (USA & Canada)  
 401.628.1600 (International)

**Website**  
[AVTECH.com](http://AVTECH.com)  
[RoomAlert.com](http://RoomAlert.com)  
[EnvironmentMonitor.com](http://EnvironmentMonitor.com)

You may find the version number and release date of the firmware that is installed on your Room Alert 3E on this screen. To check if your Room Alert 3E has the most current version, click **Click Here To Check For Updates**.



## Updating & Troubleshooting Your Room Alert 3E

### How To Download Firmware & Software Updates From [AVTECH.com](http://AVTECH.com)

Software and firmware updates are available to licensed customers with current “Maintenance Support & Update Service” (MSUS). To download:

1. Go to [AVTECH.com/Downloads](http://AVTECH.com/Downloads), or click **Downloads** on the menu bar at the top of the screen at [AVTECH.com](http://AVTECH.com).
2. In the Downloads page, enter the following user account information in the “Customer Access” box:
  - Your username, which is the email address we have on file for you
  - Your organization’s password.



Your user account information (download username & password) was emailed to you when you purchased your Room Alert 3E. This can be emailed to you again upon request.

3. Click **Login**.
4. Once you’ve logged in, you’ll see which software and firmware products you are currently enabled for. To download, click the **Download Now** button next to the appropriate product.

### How To Update Room Alert 3E’s Firmware

1. Download and save the most recent firmware update for Room Alert 3E from your customer account at [AVTECH.com/Downloads](http://AVTECH.com/Downloads).
2. Open AVTECH’s Device Manager. (If you don’t already have it installed, download it from your customer account.)
3. Select the Room Alert 3E option under the Device Status tab in the navigation bar to the left of your screen.
4. Click the **Update Firmware** link shown under the product name (or the **Update Firmware** button shown at the top of the screen).
5. Then follow the on-screen instructions to complete the update.



**IMPORTANT:** Be sure that there are no web browsers accessing your Room Alert 3E monitor from anywhere on your network before uploading the firmware as this could cause the firmware update to be incomplete or become corrupted.

## How To Discover Room Alert 3E When Your Network Blocks UDP Broadcasts

If your network blocks UDP broadcast packets on port 30718, AVTECH's Device ManagerR might not be able to automatically locate the Room Alert 3E monitor.

To manually discover your Room Alert 3E, use the Advanced Discovery option in AVTECH's Device ManagerR Application:

1. Open AVTECH's Device ManagerR. (If you don't already have it installed, download it from your customer account at [AVTECH.com/Downloads](http://AVTECH.com/Downloads).)
2. Navigate to **Advanced Discovery** under the "Device Status" tab in the navigation bar to the left of your screen.
3. In the "Advanced Discovery Options" dialog box, click **Manually Add Device/s Via IP Address**.
4. Enter your Room Alert 3E's IP address or the range of IP addresses assigned to DHCP devices on your network.
5. Click **Begin Scan**, which initiates a TCP scan on port 30718.
6. When the scan is complete, click **Close Window** and your Room Alert 3E should be automatically added to the list of discovered devices.

## How To Reset Room Alert 3E To Factory Defaults

You may need to reset your Room Alert 3E to factory defaults if:

- You are moving it to a new location and it must be reconfigured.
- It has been assigned invalid network settings and is therefore inaccessible.
- You have lost your Room Alert 3E's password.

**If your Room Alert 3E is accessible on the network, to reset it to factory defaults:**

1. Navigate to **Settings** in the web interface.

## Room Alert 3E

2. Click **Reset Defaults** in the navigation bar to the left.
3. Click **Yes** when prompted with “Are you sure you want to Reset Factory Defaults?”

Status	Settings	Help	About
MAC Address:	00-80-A3-93-53-5A	Version:	X.X.X
<b>Network</b>	<p>Are you sure you want to Reset Factory Defaults?</p> <p><input type="button" value="YES"/> <input type="button" value="NO"/></p>		
<b>SMTP Email</b>			
<b>SNMP</b>			
<b>Sensors</b>			
<b>Alarm Options</b>			
<b>Security</b>			
<b>Advanced</b>			
<b>Save Settings</b>			
<b>Reset Defaults</b>			

4. Your Room Alert 3E will automatically reboot and attempt to obtain an IP address via DHCP.
5. To automatically discover your Room Alert 3E on your network, open AVTECH's Device Manager. (If you don't already have it installed, download it from your customer account at [AVTECH.com/Downloads](http://AVTECH.com/Downloads).)

### If your Room Alert 3E is not accessible on the network, to reset it to factory defaults:

1. With your Room Alert 3E connected to the network and powered on, press and hold the reset button for at least 10 seconds until the left LED over the network jack turns off and then on again.
2. Your Room Alert 3E will automatically reboot and attempt to obtain an IP address via DHCP.
3. To automatically discover your Room Alert 3E on your network, open AVTECH's Device Manager. (If you don't already have it installed, download it from your customer account at [AVTECH.com/Downloads](http://AVTECH.com/Downloads).)

**TIP**



**IMPORTANT:** When you reset to factory defaults, you lose all of your previously configured settings, including password security.

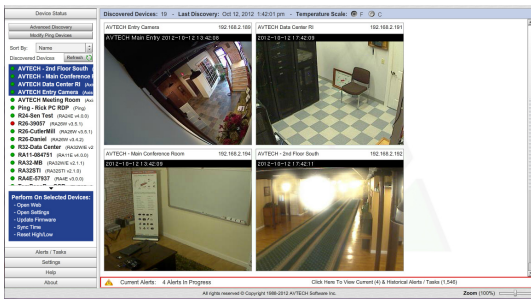
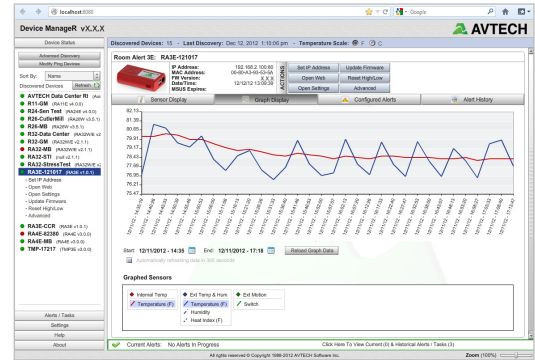


# Introduction To AVTECH's Device Manager

Device Manager is AVTECH's all-in-one software solution for the discovery, management, monitoring, alerting, logging, graphing, automatic action and more of AVTECH's physical environment monitoring hardware and Axis network cameras.

## Manage Unlimited Room Alert & TemPageR Montiors

- ✓ Control all of your Room Alert and TemPageR units from a single web browser interface, accessible from anywhere by internet.
- ✓ Take automatic corrective actions, run scripts and notify unlimited contacts on the device of their choice.
- ✓ Use dashboard widgets to customize your interface and display the information most important to you in real time.
- ✓ Automatically log and graph all of your sensor data for a comprehensive history of environmental conditions. Control the log file size automatically.

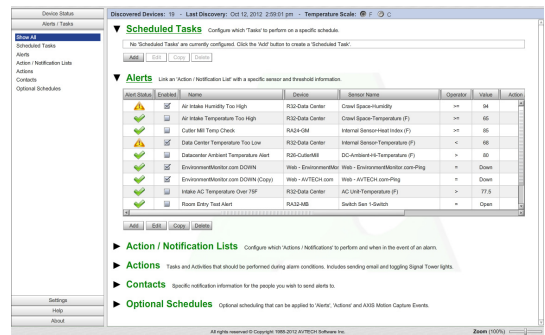


## Manage Unlimited Network Cameras

- ✓ View all of your Axis camera displays simultaneously—and control who has access!
- ✓ Automatically email Axis camera snapshots in response to alert conditions.
- ✓ Customize your alerts with links to your Axis cameras for one-click access to real-time video.

## Expand Device Manager's Functionality With Plugins

- ✓ Send customized reports with advanced statistics according to a schedule or in response to alert conditions. Modify according to each user's needs.
- ✓ Log off, shut down, reboot and execute commands on Windows and Linux / Unix systems across your network.
- ✓ Automatically text or call contacts with alerts using a text, voice or GSM (satellite) modem.



A license for Device Manager is included FREE with the purchase of any AVTECH environment monitor. Download it now from your customer account at [AVTECH.com/Downloads](http://AVTECH.com/Downloads).

### What Are Digital vs Switch Sensors?

**Digital Sensors** are those that monitor in real-time to provide digital values that can be viewed through a web or application interface, passed in alert notifications or logged for creating charts and graphs. Common digital sensors include Temperature; Outdoor Temperature; Fluid Temperature; and Temperature & Humidity.

**Switch Sensors** are those that do not provide real-time values and instead present their current status as being in or out of a specific state (i.e. on/off). These sensors have a built-in switch or circuit that changes status as a threshold is passed, indicating an alarm condition.

**\$35**  
**BEST SELLER**

### Digital Temperature Sensor



TMP-SDT-SEN

- Real-time temperature sensor.
- Temperature range: -67 – 257° F, -55 – 125° C.
- Max sensor cable distance up to 100', includes 25'.
- Compatible with Room Alert 32W, 32E, 26W, 26WO, 24E, 11E, 7E, 4E, 3E, TemPageR 4E, 3E, WiSH & WiSPR.

INCLUDES: Digital Temperature Sensor with 25' RJ-11 cable & installation note.

**\$50**

### Digital Outdoor Temperature Sensor



TMP-DOT-SEN

- Real-time temperature sensor.
- Temperature range: -67 – 257° F, -55 – 125° C.
- Max sensor cable distance up to 100', includes 25'.
- Silicon coating offers extra resilience for monitoring outdoors or in other harsh environments.
- Compatible with Room Alert 32W, 32E, 26W, 26WO, 24E, 11E, 7E, 4E, 3E, TemPageR 4E, 3E, WiSH & WiSPR.

INCLUDES: Digital Outdoor Temperature Sensor with 25' RJ-11 cable & installation note.

**\$85**  
**LAB READY**

### Digital Fluid Temperature Sensor



RMA-DFT-SEN

- Real-time fluid temperature sensor.
- Temperature range: -67 – 257° F, -55 – 125° C.
- Perfect for cooler or freezer monitoring of food, medicines & fluid temperature.
- Max sensor cable distance up to 100', includes 25'.
- Compatible with Room Alert 32W, 32E, 26W, 26WO, 24E, 11E, 7E, 4E, 3E, TemPageR 4E, 3E, WiSH & WiSPR.

INCLUDES: Digital Fluid Temperature Sensor with 25' RJ-11 cable & installation note.

**\$85**  
**BEST SELLER**

### Digital Temp & Humidity Sensor



RMA-DTH-SEN

- Real-time temperature & humidity sensor.
- Temperature range: -67 – 257° F, -55 – 125° C.
- Relative humidity range: 5 to 95% non-condensing.
- Max sensor cable distance up to 100', includes 25'.
- Compatible with Room Alert 32W, 32E, 26W, 26WO, 24E, 11E, 4E, 3E, WiSH & WiSPR.

INCLUDES: Digital Temperature & Humidity Sensor with 25' RJ-11 cable & installation note.

**\$6**

### 25' Extended Cable & Coupler



ECC-25E-SEN

- Extends the cable length of AVTECH's digital sensors or Light Tower & Relay Adapter another 25'.
- Compatible with AVTECH's Digital Temperature, Outside Temperature, Fluid Temperature, Temperature & Humidity Sensor, Light Tower & Relay Adapter.
- Note that digital sensors have a maximum cable distance of 100'. Therefore, only three (3) extensions can be connected since digital sensors have 25' cables.

INCLUDES: 25' RJ-11 extension cable with attached coupler & installation note.

**\$65**  
**BEST SELLER**

### Main Power Sensor



RMA-PS1-SEN

- Real-time main power on/off status.
- Specially designed to interface with Room Alert.
- Monitors main, UPS or single phase power.
- Max sensor cable distance up to 900', includes 25'.
- Compatible with Room Alert 32W, 32E, 26W, 26WO, 24E, 11E, 7E, 4E, 3E, WiSH & WiSPR.

INCLUDES: Main Power Sensor with 25' cable, 5V power adapter & installation note.

**\$95**  
**BEST VALUE**

### Mini UPS & Power Sensor (MUPS)



RMA-MUPS-SEN

- Real-time detection of loss of main power.
- Provides battery backup power for 15 minutes or more for any 5V device.
- Max sensor cable distance up to 900', includes 25'.
- Plugs in-line with AVTECH's 5V Power Adapter.
- Compatible with Room Alert 32W, 32E, 26W, 26WO, 24E, 11E, 7E, 4E, 3E, WiSH & WiSPR.


INCLUDES: MUPS Sensor with 25' cable & installation note.

\* Additional Sensors, Cameras & Accessories Available Online.

Order through your favorite reseller, direct from AVTECH or online at [EnvironmentMonitor.com](http://EnvironmentMonitor.com)

**\$250**  
**BEST SELLER**

### Flood Sensor w/8' Cable




- Real-time recognition of water/flood anywhere along the length of the patented flood cable.
- 8' Flood Cable with 25' RJ-11 leader cable.
- Alert triggered when sensor is activated or power lost.
- Flood cable can be extended by 8' lengths.
- Compatible with Room Alert 32W, 32E, 26W, 26WO, 24E, 11E, 7E, 4E, 3E, WiSH & WiSPR.

RMA-F008-SEN

INCLUDES: Flood Sensor with 8' Flood Cable and 25' RJ-11 leader cable, 25' sensor cable, 5V power adapter, mounting screws & installation note.

**\$115**

### 8' Flood Cable Extension




- Real-time recognition of water/flood anywhere along the length of the patented flood cable.
- Can be extended by adding additional 8' extensions.
- Designed to extend the length of the AVTECH Flood Sensor Cable to several hundred feet.
- Requires connection in-line between AVTECH's Flood Sensor (internal on Room Alert 26W/WO) and Flood Sensor Cable.

RMA-008CE-SEN

INCLUDES: 8' Flood Cable Extension & installation note.

**\$375**  
**BEST VALUE**

### Flood Sensor w/24' Cable



- Real-time recognition of water/flood anywhere along the length of the patented flood cable.
- 24' Flood Cable with 25' RJ-11 leader cable.
- Alert triggered when sensor is activated or power lost.
- Flood cable can be extended by 8' lengths.
- Compatible with Room Alert 32W, 32E, 26W, 26WO, 24E, 11E, 7E, 4E, 3E, WiSH & WiSPR.

RMA-F024-SEN

INCLUDES: Flood Sensor with 24' Flood Cable and 25' RJ-11 leader cable, 25' sensor cable, 5V power adapter, mounting screws & installation note.

**\$75**  
**BEST SELLER**

### Smoke Sensor w/Escape Light




- Real-time recognition of smoke or fire.
- Audible alert and 'escape' light is triggered when sensor is activated due to smoke or fire.
- Powered by 9V Alkaline battery (included).
- Max sensor cable distance up to 900', includes 25'.
- Compatible with Room Alert 32W, 32E, 26W, 26WO, 24E, 11E, 7E, 4E, 3E, WiSH & WiSPR.

RMA-SS1-SEN

INCLUDES: Smoke Sensor with 25' cable, 9V Alkaline battery, mounting screws, audible alert, escape light & installation note.

**\$205**

### Flood Sensor (Spot)




- Real-time recognition of flood/water under pod.
- Specially designed to interface with Room Alert.
- Powered by 9V Alkaline battery (included).
- Max sensor cable distance up to 900', includes 25'.
- Compatible with Room Alert 32W, 32E, 26W, 26WO, 24E, 11E, 7E, 4E, 3E, WiSH & WiSPR.

RMA-FS2-SEN

INCLUDES: Flood Sensor (Spot) with 25' cable, 9V Alkaline battery & installation note.

**\$70**

### Motion Sensor




- Detect motion up to approximately 35' with 84° angle.
- Alert triggered when sensor is activated.
- Powered by 12V power adapter (included).
- Max sensor cable distance up to 900', includes 25'.
- Compatible with Room Alert 32W, 32E, 26W, 26WO, 24E, 11E, 7E, 4E, 3E, WiSH & WiSPR.

RMA-MOT2-SEN

INCLUDES: Motion Sensor with 25' cable, 12V DC Power Supply, mounting screws & installation note.

**\$25**

### Room Entry Sensor




- Easy recognition of door/cabinet open or closed status.
- Standard use on door or window and adjoining frame.
- Max sensor cable distance up to 900', includes 25'.
- Compatible with Room Alert 32W, 32E, 26W, 26WO, 24E, 11E, 7E, 4E, 3E, WiSH & WiSPR.
- Requires connection to Sound, Light & Entry (SLE) unit for alert on momentary status change.

RMA-RE1-SEN

INCLUDES: Room Entry Sensor with 25' cable & installation note.

**\$25** **NEW**

### Glass Break Sensor



- Detects sound of breaking glass in window pane.
- Sensor monitors 32 sq ft in surface area.
- Max sensor cable distance up to 900', includes 25'.
- Compatible with Room Alert 32W, 32E, 26W, 26WO, 24E, 11E, 7E, 4E, 3E, WiSH & WiSPR.
- Requires connection to Sound, Light & Entry (SLE) unit for alert on momentary status change.

RMA-GB1-SEN

INCLUDES: Glass Break Sensor with 25' cable & installation note.

\* Additional Sensors, Cameras & Accessories Available Online.

**\$40**  
**BEST SELLER**

### Air Flow 1 Sensor (NC)

- Real-time recognition of air flow stop/start.
- Use in HVAC duct, under raised floors, or near fan.
- Max sensor cable distance up to 900', includes 25'.
- Compatible with Room Alert 32W, 32E, 26W, 26WO, 24E, 11E, 7E, 4E, 3E, WiSH & WiSPR.

RMA-AF1-SEN

INCLUDES: Air Flow 1 Sensor (Normally Closed) with 25' cable & installation note.

**\$40**

### Air Flow 2 Sensor (NO)

- Real-time recognition of air flow stop/start.
- Use in HVAC duct, under raised floors, or near fan.
- Max sensor cable distance up to 900', includes 25'.
- Compatible with Room Alert 32W, 32E, 26W, 26WO, 24E, 11E, 7E, 4E, 3E, WiSH & WiSPR

RMA-AF2-SEN

INCLUDES: Air Flow 2 Sensor (Normally Open) with 25' cable & installation note.

**\$145**

### Relay Switch (Low Voltage) \*\*

- Allows low voltage devices to be turned on/off.
- Three (3) device relays with visible relay status lights.
- One (1) general alarm relay for connection to alarm panel/box.
- Each relay supplies 3A at 125VAC or 1A at 24VAC.
- Compatible with Room Alert 32W, 32E, 4E & 3E. Room Alert 32W, 32E & 3E require LT-32-ADP.

RMA-RELAY-SEN

INCLUDES: Relay Sensor with 25' cable & installation note.

**\$75**  
**BEST VALUE**

### Sound, Light & Entry (SLE)

- Real-time recognition of sound, light and/or entry.
- Includes external Room Entry Sensor (\$25 value).
- Specially designed to interface with Room Alert.
- Max sensor cable distance up to 900', includes 25'.
- Compatible with Room Alert 32W, 32E, 26W, 26WO, 24E, 11E & 7E.
- Required for alerting on momentary status changes of Room Entry Sensor or Glass Break Sensor.

RMA-SLE-SEN

INCLUDES: SLE Sensor with 25' cable, Room Entry Sensor, 5V power adapter & installation note.

**\$185**  
**HEAVY DUTY**

### Panic Button 1

- Designed to be used as an emergency alarm to provide warning where someone is working and may need help or conditions reach an alarm state.
- Palm or foot size, locks in place, pull to release.
- NEMA rated for weather and industrial use.
- Compatible with Room Alert 32W, 32E, 26W, 26WO, 24E, 11E, 7E, 4E, 3E, WiSH & WiSPR.

RMA-PB1-SEN

INCLUDES: Panic Button 1 with 25' cable & installation note.

**\$125**  
**BEST VALUE**

### Panic Button 2

- Designed to be used as an emergency alarm to provide warning where someone is working and may need help or conditions reach an alarm state.
- Small size, locks in place, pull to release.
- NEMA rated for weather and industrial use.
- Compatible with Room Alert 32W, 32E, 26W, 26WO, 24E, 11E, 7E, 4E, 3E, WiSH & WiSPR.

RMA-PB2-SEN

INCLUDES: Panic Button 2 with 25' cable & installation note.

**\$145**  
**BEST SELLER**

### Wireless Sensor Hub (Powered)

- Internal Digital Temperature Sensor.
- Temperature range: -67 – 257° F, -55 – 125° C.
- 2 digital ports, 1 switch sensor channel.
- Max wireless distance from Room Alert unit or WiSPR is 250' in ideal conditions.
- Max 10 WiSH / WiSPR per Room Alert unit.
- Compatible with Room Alert 32W & 26W ONLY.

RA26W-PWSH-HUB

INCLUDES: Internal Digital Temperature Sensor, 2 Digital Sensor Ports, 1 Switch Sensor Port, 5V power adapter & installation note. Max range approximately 250'.

**\$195**

### Wireless Sensor Hub & Power Relay

- Internal Digital Temperature Sensor.
- Temperature range: -67 – 257° F, -55 – 125° C.
- 2 digital ports, 1 switch sensor channel.
- Max wireless distance from Room Alert unit or WiSPR is 350' in ideal conditions.
- Max 10 WiSH / WiSPR per Room Alert unit.
- Compatible with Room Alert 32W & 26W ONLY.

RA26W-WSPR-HUB

INCLUDES: Powered relay technology, internal Digital Temperature Sensor, 2 Digital Sensor Ports, 1 Switch Sensor Port, 5V power adapter & installation note. Max range approximately 350'.

\* Additional Sensors, Cameras & Accessories Available Online.

\*\* Use with Room Alert 32W, 32E & 3E requires LT-32-ADP.

\$180

### Light Tower \*\*



ST-2RG-LT

- Light Tower lights turn on when alarms are detected (i.e. pings fail, high temps, etc.).
- Lights turn on/off via SNMP set, URL & interactively via AVTECH's Device Manager software.
- Includes 3' Light Cable; no extension cable available.
- Compatible with Room Alert 32W, 32E, 4E & 3E. Room Alert 32W, 32E & 3E require LT-32-ADP.

INCLUDES: Light Tower, Red & Green Lights, 3' cable, mount bracket & installation note.

\$250

**MOST POPULAR**

### Light Tower w/Audio \*\*



ST-RYG-LT

- Light Tower lights turn on when alarms are detected (i.e. pings fail, high temps, etc.).
- Lights turn on/off via SNMP set, URL & interactively via AVTECH's Device Manager software.
- Adjustable audio alarm with intensity range of 0 to 95 dB (at 1m).
- Includes 15' Light Cable; 25' Extension Cable available.
- Compatible with Room Alert 32W, 32E, 4E & 3E. Room Alert 32W, 32E & 3E require LT-32-ADP.

INCLUDES: Light Tower w/Audio, Red, Yellow & Green Lights, 15' cable, mount bracket & installation note.

\$279

**BEST SELLER**

### Axis M1031-W Camera Bundle

\* We offer all Axis cameras... call us for a quote.



AX-M1031W-CAM

- Superior image quality using a progressive scan CMOS image sensor and advanced video processing.
- Supports 30 frames/second up to 640 x 480.
- Built-in microphone, speaker, motion and audio detection.
- Advanced alerting when sensors trip and snap shot photos sent with links to live video.
- Connects via Wireless IEEE802.11g and Ethernet.

INCLUDES: Axis M1031-W Network Camera, mounting stand, built-in microphone, speaker, motion and audio sensors, tamper alarm, Device Manager software license & installation note.

\$75

### 25' Light Tower Extension Cable



ST-025G2-CAB

- Designed to extend the length of AVTECH's Light Tower w/Audio.
- Can be extended by adding additional 25' extensions. Maximum extension length is 100'.
- Requires connection in-line between AVTECH's Light Tower w/Audio and Room Alert 32W, 32E or 4E environment monitors.
- Compatible with the Light Tower w/Audio ONLY.

INCLUDES: 25' Light Tower Extension Cable & installation note.

\$75

### Light Tower & Relay Adapter



LT-32-ADP

- Required to connect the Light Tower, Light Tower w/Audio or Relay Switch Sensor to AVTECH's Room Alert 32W, 32E or 3E. Allows use of the Light Tower, Light Tower w/Audio or Relay Switch Sensor up to 100' away from the Room Alert ID box.
- Includes (1) relay switch that can be used to turn on/off low voltage devices automatically in response to an alarm condition and separate 5V power supply.
- The relay supplies 0.3A at 125VAC or 1A at 24VAC.

INCLUDES: Light Tower & Relay Adapter, 25' RJ 11 cable, 5V power adapter & installation note.

\$70

### Power Over Ethernet Active Splitter



POE-ADP-01

- Allows easy integration of Power over Ethernet (PoE) technology with AVTECH's monitoring hardware.
- Use with Room Alert and/or TempPageR and monitor anywhere PoE enabled Ethernet is available.
- Active Splitter supports 10/100BaseT.
- Compatible with Room Alert 26W, 26WO, 24E, 11E, 7E, 4E, TempPageR 4E & 3E.

INCLUDES: PoE Active Splitter (5V, RoHS), 2 adapter cables & installation note.

\$175

**BEST SELLER**

### GSM Modem w/USB Connect



MOD-GSM-1

- Immediate connectivity to any GSM/GPRS network.
- Controlled via AT commands.
- Use with AVTECH's Dial Out Plugin and Device Manager software to trigger modem to dial out to any GSM network and send your alert generated by Room Alert, TempPageR or Axis camera.
- Compatible with AVTECH's Device Manager software, Dial Out Plugin & PC with USB.

INCLUDES: AirLink GL 6110 GSM Modem w/USB Connect, 8' USB connection cable, FME Antenna & installation note.

\$45

**BEST VALUE**

### Voice Modem w/USB Connect



MOD-VCE-2

- 56K Phone/Internet/Fax modem that connects computers to the internet using a dialup connection.
- Use with AVTECH's Dial Out Plugin and Device Manager software to trigger modem to dial a phone and send or speak text when an alert is generated from any Room Alert, TempPageR or Axis camera.
- Compatible with AVTECH's Device Manager software, Dial Out Plugin & PC with USB.

INCLUDES: 56K USB Phone/Internet/Fax modem, installation CD & installation note.

\* Additional Sensors, Cameras & Accessories Available Online.

\*\* Use with Room Alert 32E, 32W & 3E requires LT-32-ADP.



## How To Purchase AVTECH Products

AVTECH products are available for purchase around the world and used in 106 countries, on Antarctica and in space. You can purchase through your favorite reseller \*, direct from AVTECH, or online through our store. When ordering from AVTECH, we are happy to accept your organization's purchase order (PO), as well as payment via credit card or wire transfer. All orders ship the same or next business day.

**Resellers: Order Through Your Favorite Reseller** – Ask them to contact AVTECH on your behalf. We can set them up to resell AVTECH products in minutes and ship to you the same or next business day.

**Phone: 888.220.6700 / 401.628.1600** (9-5 EST) – Call AVTECH direct and ask to speak with a 'Product Specialist'. They can take your order by phone for immediate processing or provide you with an immediate PDF quote by email. If you are outside of the U.S.A. or Canada, please ask to speak with an 'International Product Specialist' as they can better address international shipping and customs concerns.

**Website: [EnvironmentMonitor.com](http://EnvironmentMonitor.com)** (Anytime) – Place your order online at any time through the AVTECH store for immediate processing. International money rates are available online to view pricing and make payment in your local currency. Periodic online specials are available and change on a regular basis.

**Email: [Orders@AVTECH.com](mailto:Orders@AVTECH.com)** (Anytime) – Send your organization's purchase order (PO), completed and scanned quote form or order instructions to AVTECH via email. We prefer to receive POs in PDF format although can accept Word and Excel formats if necessary. Other file formats are not accepted.

**Fax: 401.628.1601** (Anytime) – Send your purchase order (PO), completed quote form or order instructions to AVTECH via fax at any time. Faxes are received in a secure facility.

\* NOTE: International orders ship when payment in U.S.D. is received. Wire transfer or credit card payment is preferred. Checks must be in U.S.D. and drawn on a U.S. bank.

## Maintenance Support & Update Service (MSUS)

'Maintenance Support & Update Service' (MSUS) for AVTECH's physical IT & facilities environment monitoring products is an important type of 'IT & facilities insurance'. If a problem arises, help is within easy and immediate access. This enables your organization to keep the servers, network and entire operation available and running for everyone's benefit. It also allows managers to sleep well at night, comfortable knowing that Room Alert, TemPageR and Device ManageR are on the job 24 hours a day!

During the 'Maintenance Support & Update Service' (MSUS) period, AVTECH will make available to current customers without charge, copies of current firmware, software and MIBs for licensed products. Firmware and software updates (approximately 3-4 times per year) will be provided via website download. Updates shall include release notes or revised documentation when it is appropriate. In addition, AVTECH will provide technical support as may be required, download access, current product firmware/software/MIBs, notice of new products and services, monthly email newsletter or update communication and various special offers, which provide benefit to the licensed customer. Room Alert and TemPageR hardware customers will enjoy full hardware replacement service on the ID box in case it should fail to function properly during normal use (i.e. without tamper or damage). This valuable service insures that current firmware and software versions for products, documentation, as well as technical support and fully functioning hardware, are available to licensed customers during the MSUS period.

MSUS is an annual service that is included for free during the first year when any AVTECH monitoring product is purchased. MSUS is optionally extendable thereafter on an annual basis, paid for in advance. AVTECH automatically sends out optional renewal notices sixty (60) and thirty (30) days prior to expiration of MSUS via email, for easy renewal. Failure to renew this service will result in a loss of the valuable and important benefits listed above. Reinstatement after MSUS has expired will incur an additional service fee and void the monitor replacement warranty. Support for sensors is complimentary for ninety (90) days. For additional information, please see the warranty or contact AVTECH directly.

**Technical Support services are available 9-5:00 EST through:**

**Live Chat:** [AVTECH.com/LiveChat.htm](http://AVTECH.com/LiveChat.htm)

**Email:** [Support@AVTECH.com](mailto:Support@AVTECH.com)

**Website:** [AVTECH.com/Support](http://AVTECH.com/Support)

**Phone:** 888.220.6700 / 401.628.1600

## Contact Us

**AVTECH Software, Inc.**  
16 Cutler Street, Cutler Mill  
Warren, RI 02885-2761 USA

Sales: 888.220.6700  
Phone: 401.628.1600  
Fax: 401.628.1601

## Visit Us

[AVTECH.com](http://AVTECH.com)  
[EnvironmentMonitor.com](http://EnvironmentMonitor.com)  
[RoomAlert.com](http://RoomAlert.com)  
[TemPageR.com](http://TemPageR.com)

## Trademarks

© Copyright 1988-2012  
AVTECH Software, Inc.  
All Rights Reserved Worldwide.  
AVTECH, AVTECH Software,  
AVTECH.com, AVTECHSoftware.com,  
EnvironmentMonitor.com,  
'Environment Monitoring Made Easy!'  
'Network-Wide Monitoring Made Easy!'  
Device ManageR, Room Alert,  
RoomAlert.com, Signal Tower, SLE, WiSH,  
WiSPR, TemPageR and TemPageR.com.

## Privacy Promise

AVTECH does not sell or share your email or other contact information. However, AVTECH uses some email marketing because our prospects and customers consider it important and convenient. When we do, AVTECH provides customers with an easy means to decline further email of that type.

## Current Versions

To confirm your organization is running current software and firmware versions or to download these versions for any licensed AVTECH product under current MSUS, please visit [www.AVTECH.com](http://www.AVTECH.com) and look for the 'Current Versions' box on the 'Downloads' page.

## Tell Us Your Story

At AVTECH, we truly want to know when we do well and when we miss expectations. Working to provide the best products and services means making changes that typically succeed and occasionally fall short. Please take a moment and email us your feedback at [Feedback@AVTECH.com](mailto:Feedback@AVTECH.com). It is always appreciated. Thank You.



**AVTECH.com**

**Protect Your IT Facility... *Don't Wait Until It's To Late!***